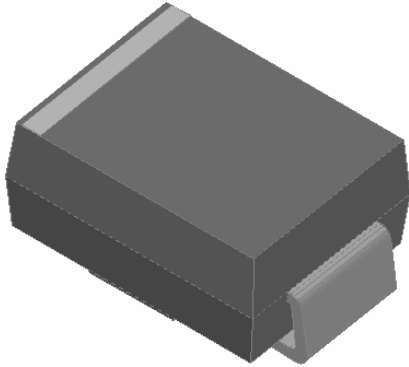




Surface Mount Super Fast Recovery Rectifier

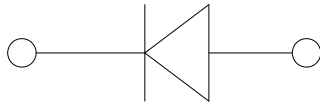


Features

- Low profile package
- Ideal for automated placement
- Glass passivated chip protection
- High forward surge capability
- Super Fast reverse recovery time
- Meets MSL level 1 per J-STD-020 & LF maximum peak of 260°C

Typical Applications

For use in high frequency rectification of power supplies & inverters & converters & and freewheeling diodes for consumer and telecommunication.



Mechanical Data

- Package: DO-214AA (SMB)
- Molding compound meets UL-94V-0 flammability rating & RoHS-compliant & halogen-free
- Terminals: Tin plated leads & solderable per J-STD-020 and JESD22-B102
- Polarity: Cathode line denotes the cathode end

Maximum Ratings (Ta = 25°C)

Maximum Repetitive Peak Reverse Voltage	VRRM	V	5	15	25	40	50	60	75	100
Maximum RMS Voltage	VRMS	V	5	15	25	40	50	60	75	100
Maximum DC Blocking Voltage	VDC	V	5	15	25	40	50	60	75	100
Average rectified output current 40% duty cycle sine wave & resistance load & TL (Fig.1)		A	2.0							
Forward Surge Current (Non-repetitive) 40% duty cycle Half-sine wave & 1 cycle & Ta = 25°C	IFSM	A	5.0							
Forward Surge Current (Non-repetitive) 4ms & square wave & 1 cycle & Ta = 25°C			1.0							
Current squared time 4ms @ 25°C, 10ms @ 125°C	I²t	A²s	1.0 + 5							
Storage temperature	Tstg		-55 to 150							
Junction temperature	Tj		-55 to 150							



UG2A THRU UG2J

Electrical Characteristics $T_a = 125$ Unless otherwise specified

PARAMETER	SYMBOL	UNIT	TEST CONDITIONS	UG2A	UG2B	UG2C	UG2D	UG2F	UG2G	UG2H	UG2J
Maximum instantaneous forward voltage	V_F	V	$I_F = 1.2 \text{ A}$	1.2				1.25		1.4	
Maximum reverse recovery time	t_{rr}	ns	$I_F = 1.5 \text{ A}$ $I_R = 1.25 \text{ A}$	25						35	
Maximum DC reverse current at rated DC blocking voltage	I_R	A									



UG2A THRU UG2J

Thermal Characteristics T_a 1 25 Unless otherwise specified

PARAMETER	SYMBOL	UNIT	UG2A	UG2B	UG2C	UG2D	UG2F	UG2G	UG2H	UG2J
-----------	--------	------	------	------	------	------	------	------	------	------

Typical Thermal resistance



UG2A THRU UG2J

.....

Ordering Information (Example)

PREFERRED P/N	PACKING CODE	UNIT WEIGHT(g)	MINIMUM PACKAGE(pcs)	INNER BOX QUANTITY(pcs)	OUTER CARTON QUANTITY(pcs)	DELIVERY MODE
---------------	--------------	----------------	----------------------	-------------------------	----------------------------	---------------

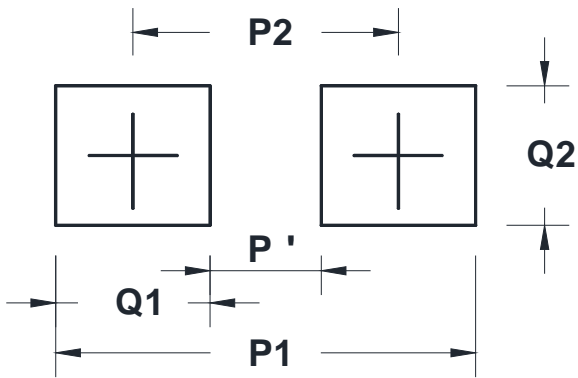
(# * .

G! G * * & ' MU b [n \ c i ' MU b [W]HY W\ b W/h f e m]7 c " žk@hkX "& %mU b [^]
F Y j " & " - ž & \$! G Y d! & & ' .



UG2A THRU UG2J

Suggested pad layout



Dimensions in millimeters

DO-214AA(SMB)	
Dim	Millimeters
P1	4.0
P2	4.0
P'	1.0
Q1	2.5
Q2	2.0



UG2A THRU UG2J

Disclaimer

The information presented in this document is for reference only. Yangzhou Yangjie Electronic Technology Co., Ltd. reserves the right to modify the information without notice.

* # * *

G! G* * & ' MU b [n \ c i ' MU b [W]HY W\ b W/h f ě m]7 c " žk@hkX "& %mU b [^]
F Y j " & " - ž & \$! G Y d! & & '